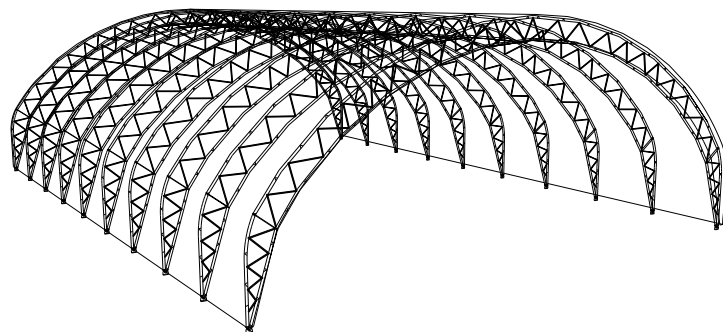




DP Series



Finish

Primary structural frames are hot-dipped galvanized

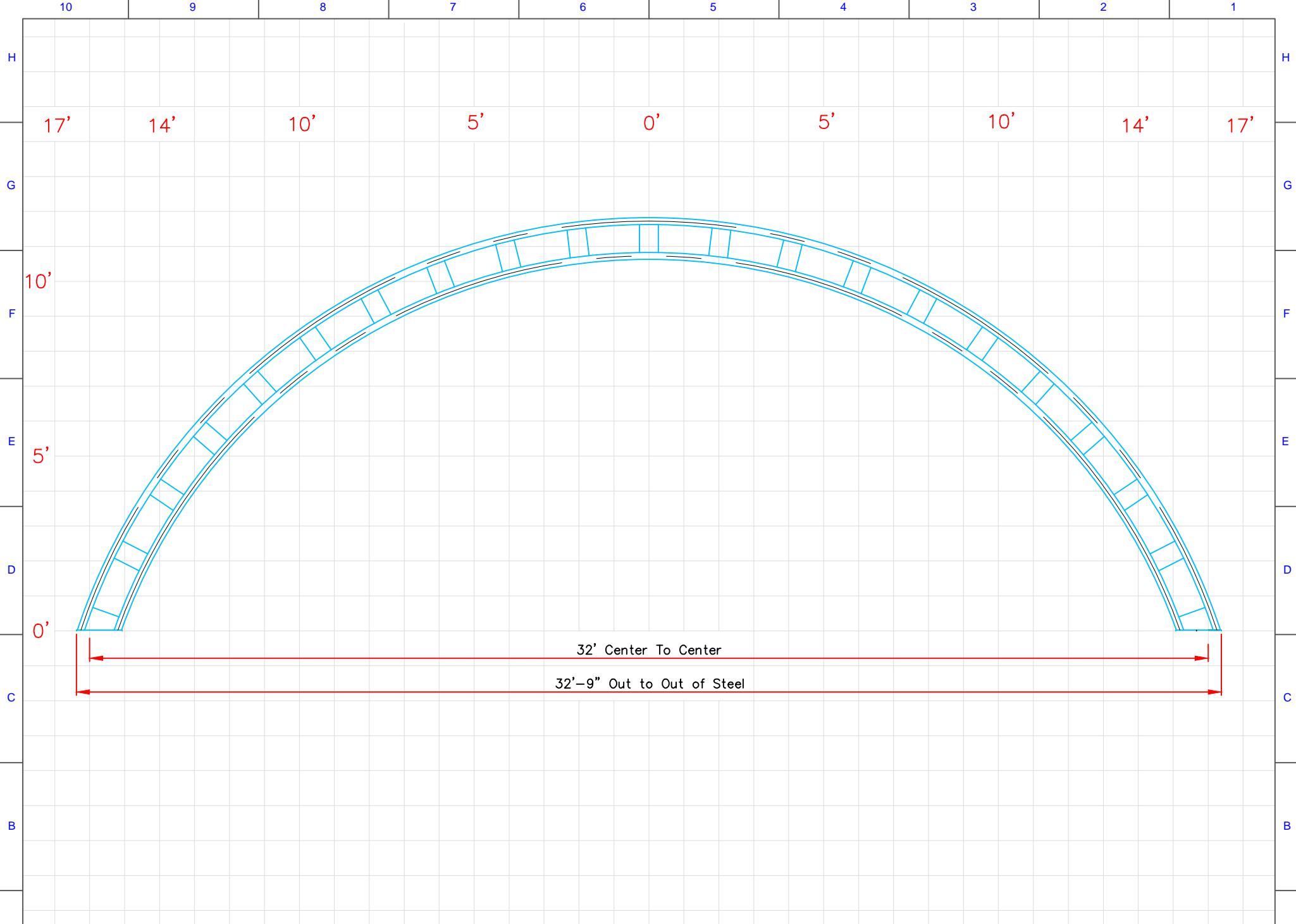
Secondary framing uses GatorShield-patented triple layer Flo-Coat rust and corrosion resistant product protection

Fabric

12 oz.-Nova-Shield Fabric with ArmorKote

Models

32' DP
40' DP
44' DP
50' DP
53' DP
61' DP
65' DP Short Leg
65' DP Long Leg
68' DP
72' DP
80' DP
100' DP Short Leg
100' DP Long Leg



THIS MATERIAL IS THE PROPERTY OF NATURAL LIGHT FABRIC STRUCTURES AND SHOULD NOT BE REPRODUCED, PUBLISHED OR DISCLOSED TO OTHERS WITHOUT AUTHORIZATION AND SHALL NOT BE USED IN ANY WAY AGAINST OR DETRIMENTAL TO NATURAL LIGHT FABRIC STRUCTURES JORDAN, MN

DESCRIPTION:

32' Profile

SERIES:

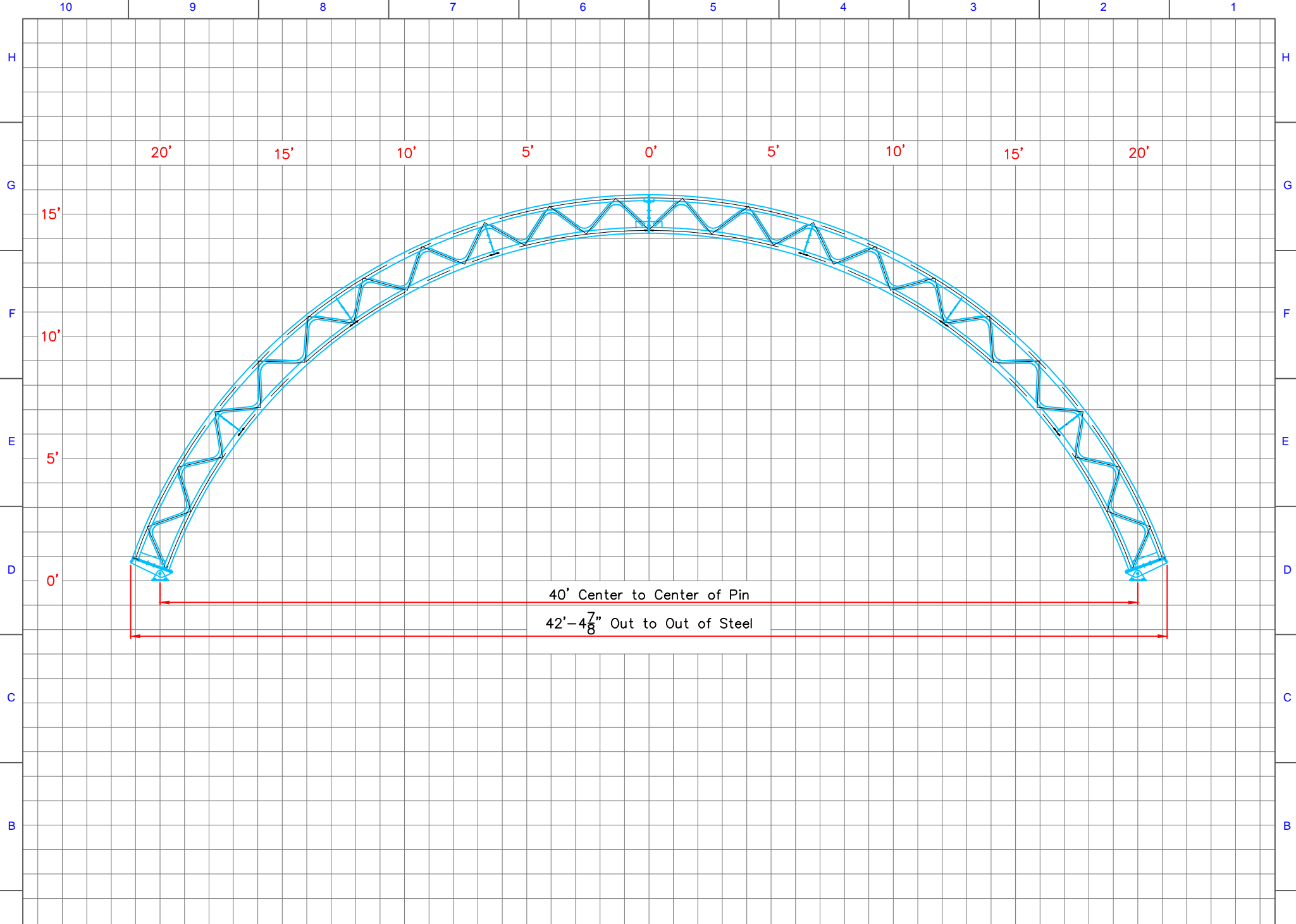
DP32

DATE:

07-26-2013



**NATURAL LIGHT
FABRIC STRUCTURES**



THIS MATERIAL IS THE PROPERTY OF NATURAL LIGHT FABRIC STRUCTURES AND SHOULD NOT BE REPRODUCED, PUBLISHED OR DISCLOSED TO OTHERS WITHOUT AUTHORIZATION AND SHALL NOT BE USED IN ANY WAY AGAINST OR DETRIMENTAL TO NATURAL LIGHT FABRIC STRUCTURES JORDAN, MN

DESCRIPTION:
40' Profile

SERIES:
DP40

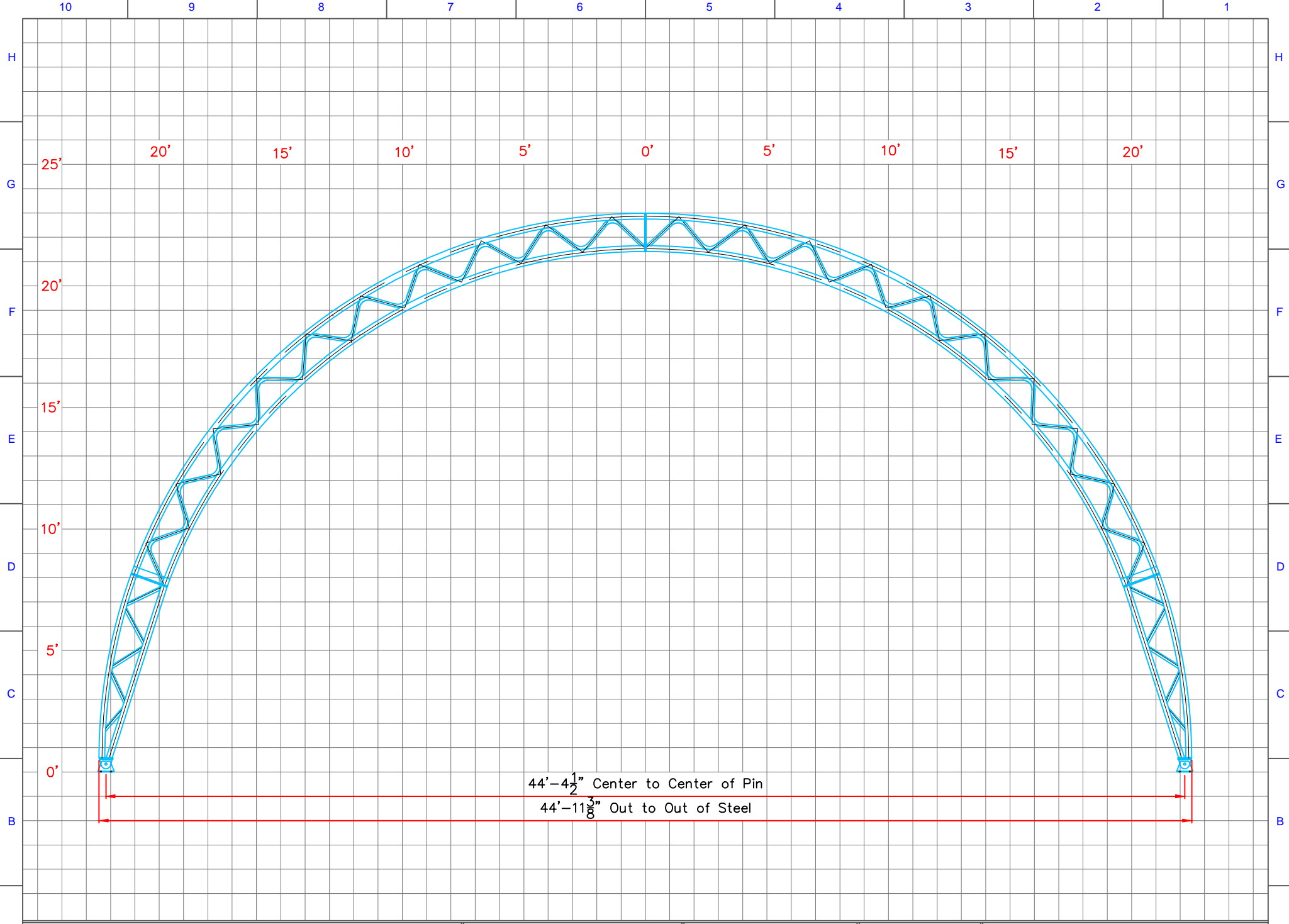
DATE:
1-25-2011



A

A

10 9 8 7 6 5 4 3 2 1



44'-4 $\frac{1}{2}$ " Center to Center of Pin
 44'-11 $\frac{3}{8}$ " Out to Out of Steel

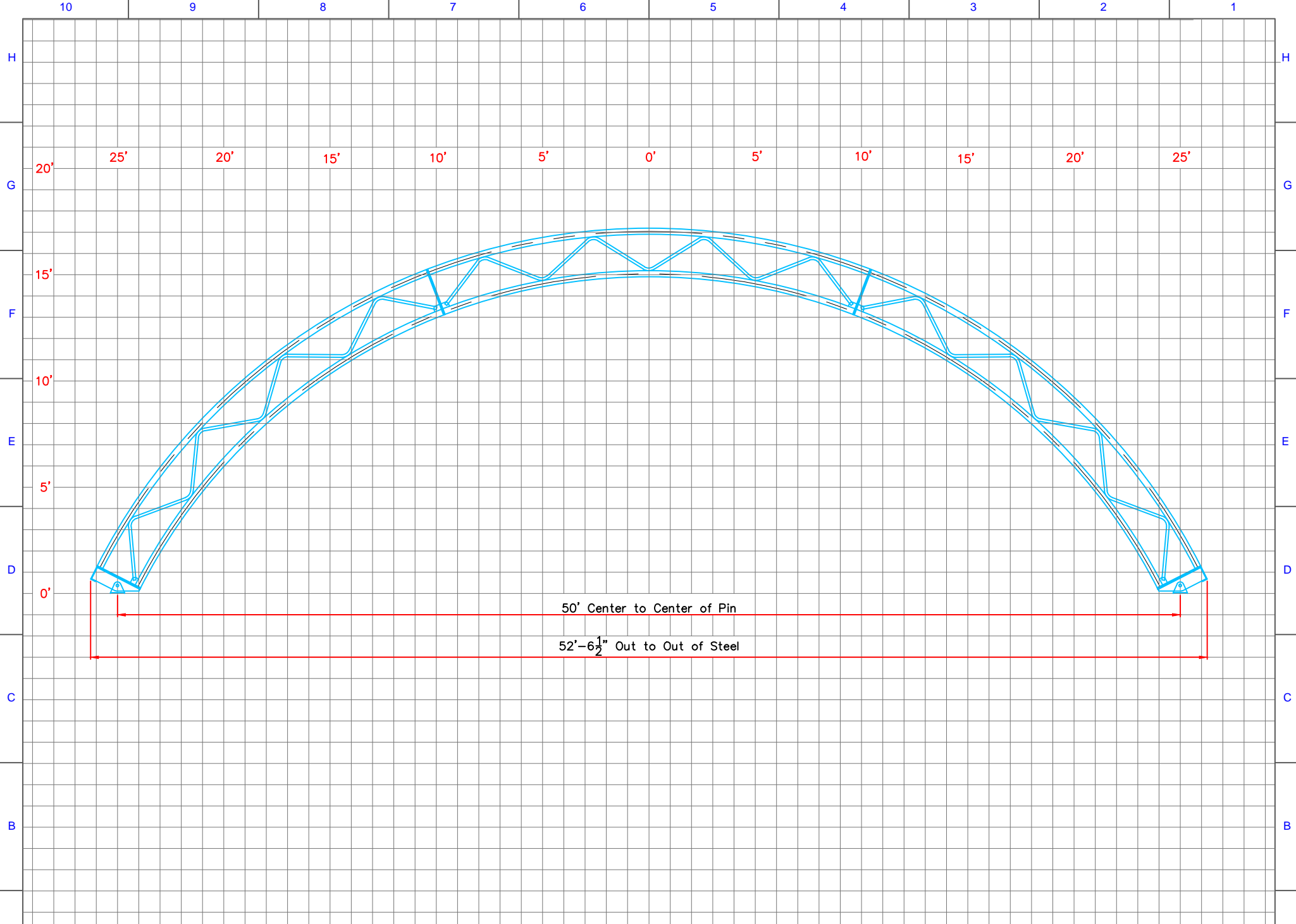
THIS MATERIAL IS THE PROPERTY OF NATURAL LIGHT FABRIC STRUCTURES AND SHOULD NOT BE REPRODUCED, PUBLISHED OR DISCLOSED TO OTHERS WITHOUT AUTHORIZATION AND SHALL NOT BE USED IN ANY WAY AGAINST OR DETRIMENTAL TO NATURAL LIGHT FABRIC STRUCTURES JORDAN, MN

DESCRIPTION:
44' Profile

SERIES:
DP44

DATE:
 1-25-2011





THIS MATERIAL IS THE PROPERTY OF NATURAL LIGHT FABRIC STRUCTURES AND SHOULD NOT BE REPRODUCED, PUBLISHED OR DISCLOSED TO OTHERS WITHOUT AUTHORIZATION AND SHALL NOT BE USED IN ANY WAY AGAINST OR DETRIMENTAL TO NATURAL LIGHT FABRIC STRUCTURES JORDAN, MN

DESCRIPTION:
50' Profile

SERIES:
DP50

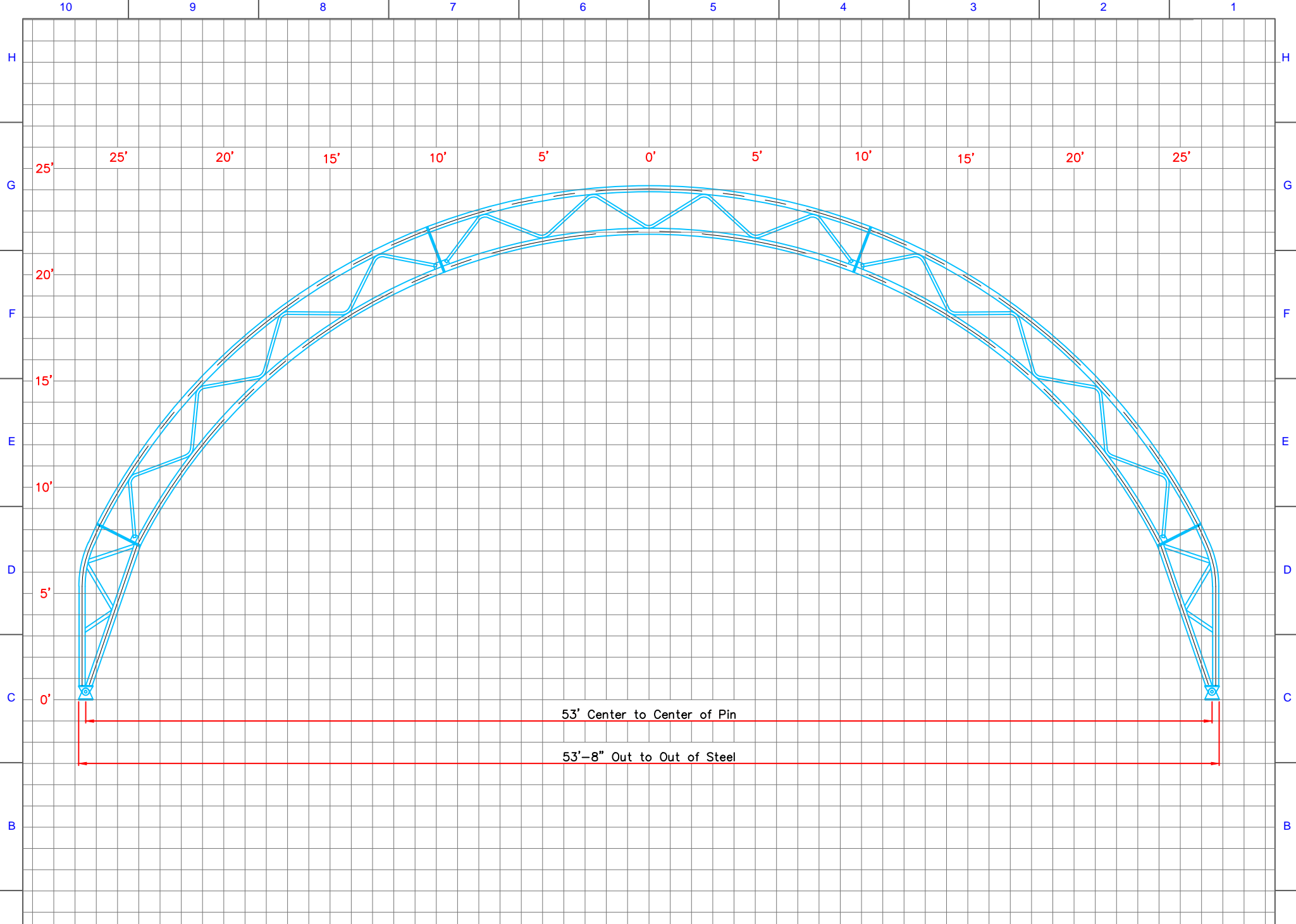
DATE:
1-25-2011



A

A

10 9 8 7 6 5 4 3 2 1



THIS MATERIAL IS THE PROPERTY OF NATURAL LIGHT FABRIC STRUCTURES AND SHOULD NOT BE REPRODUCED, PUBLISHED OR DISCLOSED TO OTHERS WITHOUT AUTHORIZATION AND SHALL NOT BE USED IN ANY WAY AGAINST OR DETRIMENTAL TO NATURAL LIGHT FABRIC STRUCTURES JORDAN, MN

DESCRIPTION:
53' Profile

SERIES:
DP53

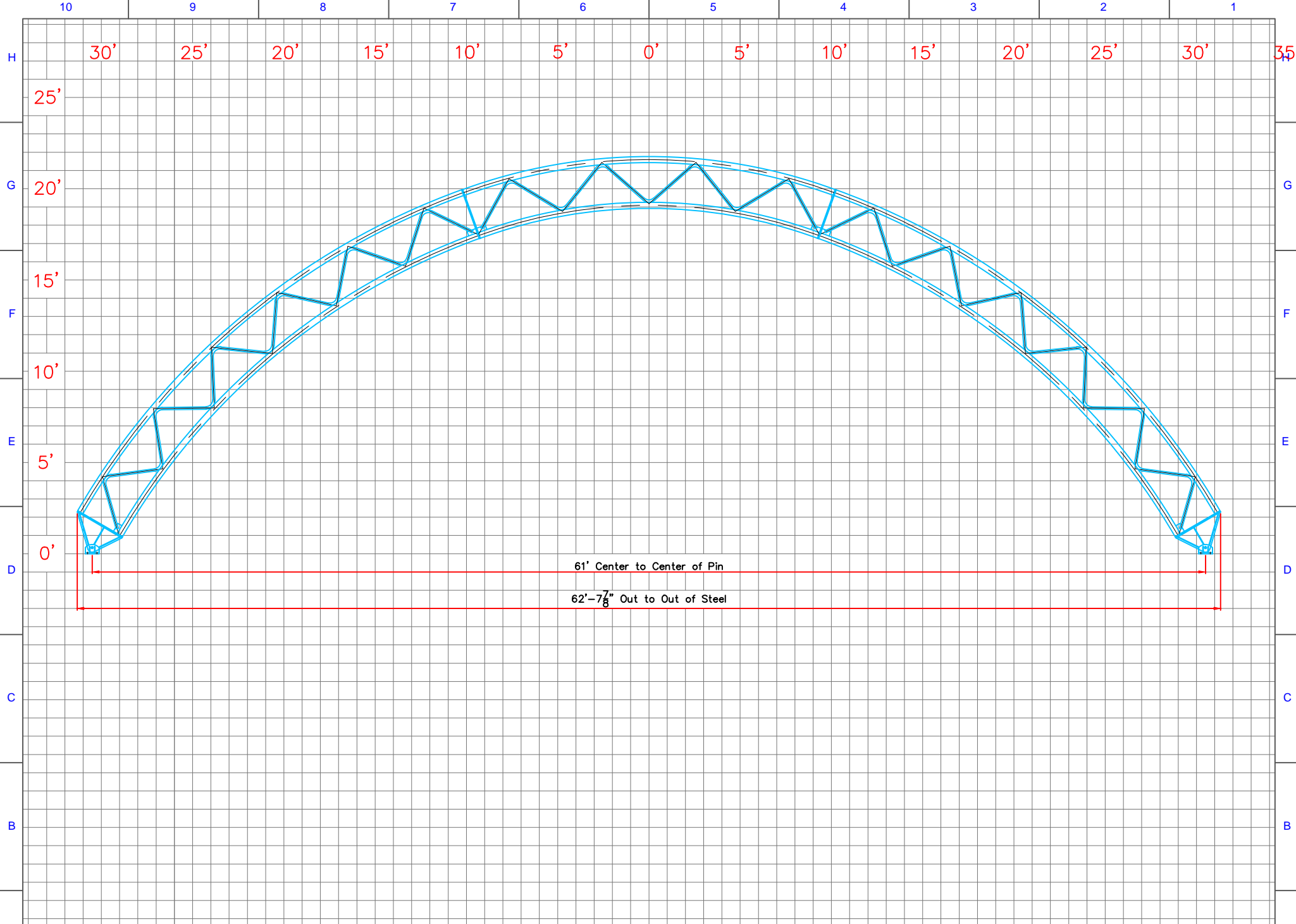
DATE:
1-25-2011



A

A

10 9 8 7 6 5 4 3 2 1



THIS MATERIAL IS THE PROPERTY OF NATURAL LIGHT FABRIC STRUCTURES AND SHOULD NOT BE REPRODUCED, PUBLISHED OR DISCLOSED TO OTHERS WITHOUT AUTHORIZATION AND SHALL NOT BE USED IN ANY WAY AGAINST OR DETRIMENTAL TO NATURAL LIGHT FABRIC STRUCTURES JORDAN, MN

DESCRIPTION:

61' Profile

SERIES:

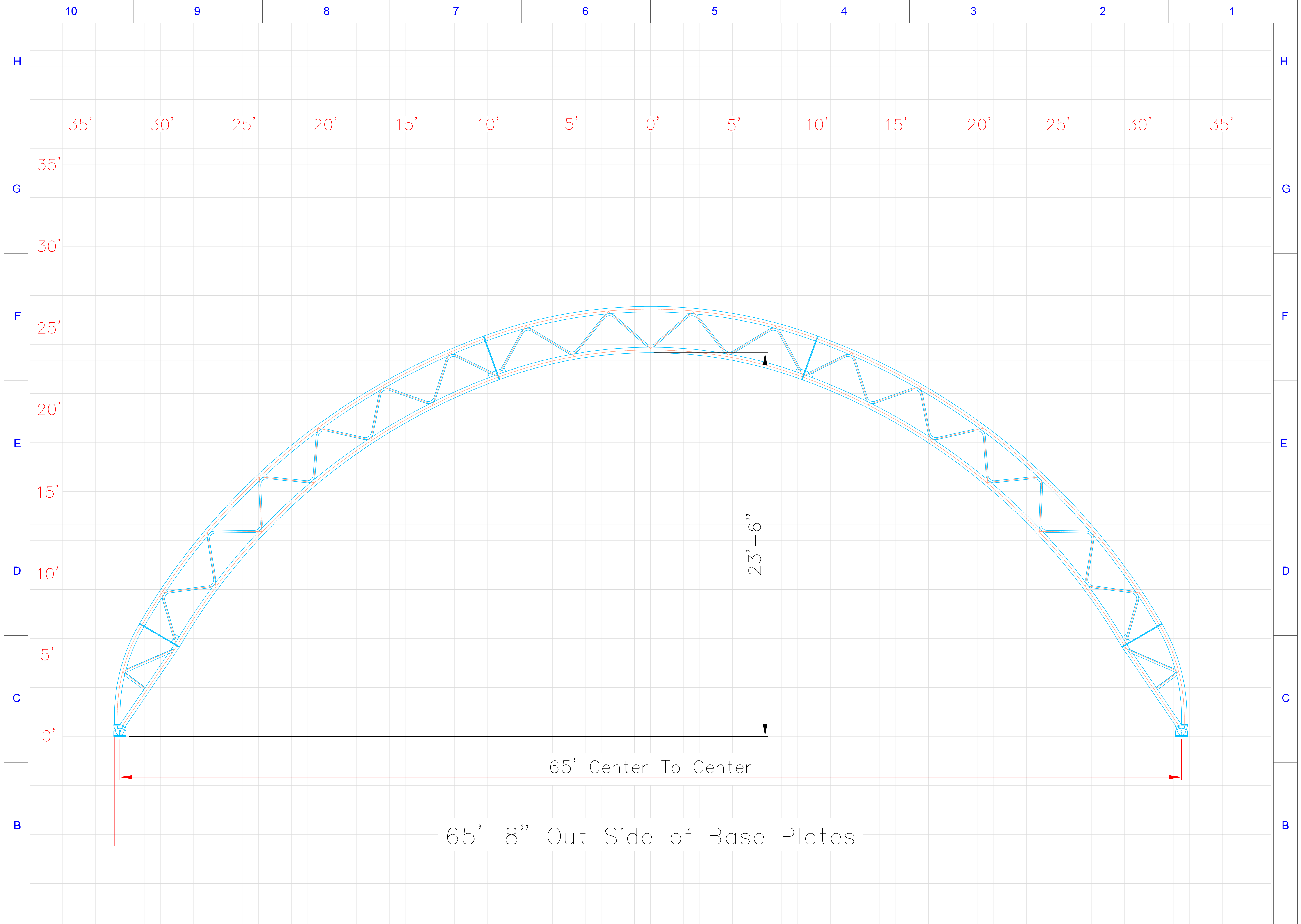
DP61

DATE:

1-25-2011



NATURAL LIGHT
FABRIC STRUCTURES



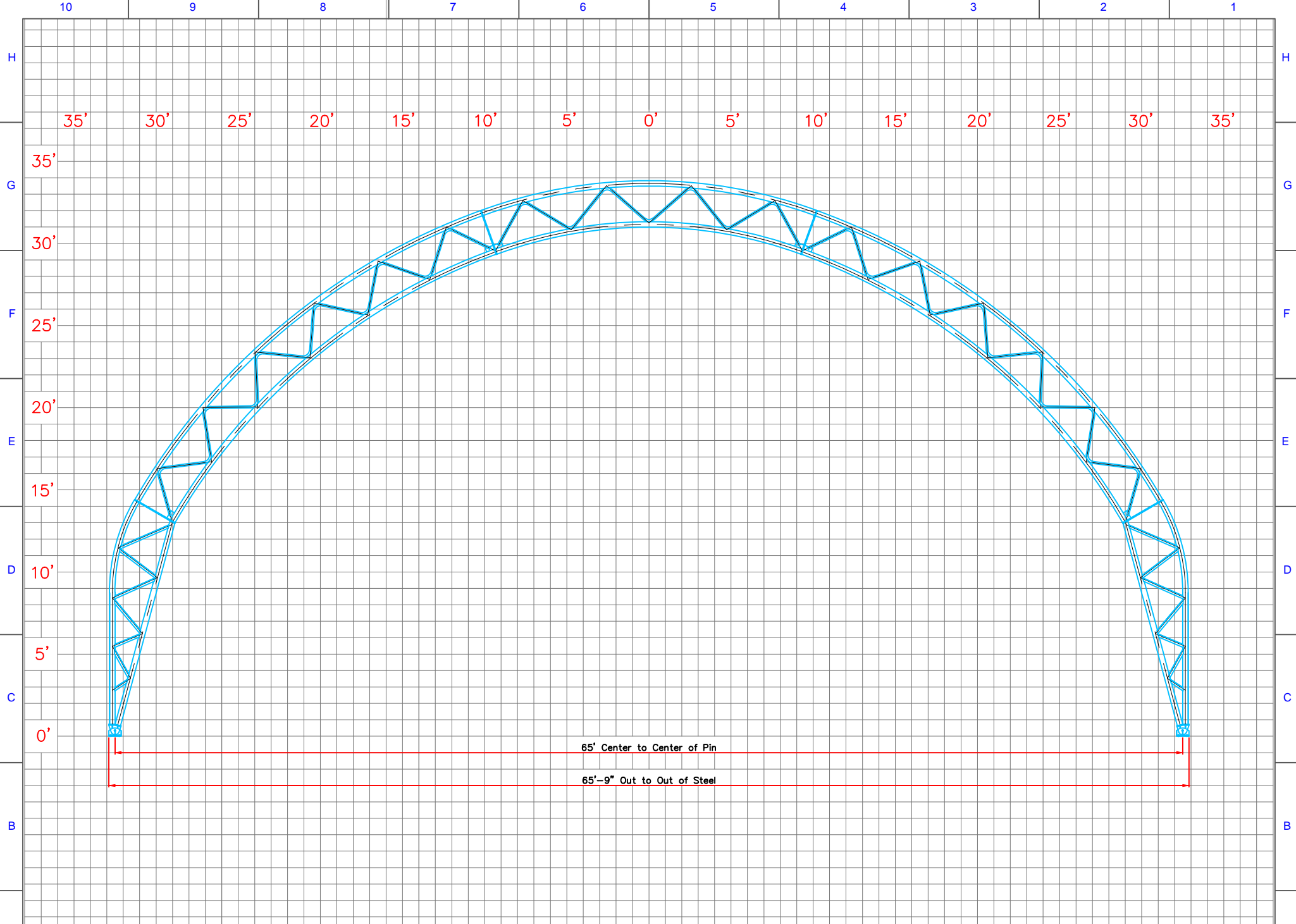
THIS MATERIAL IS THE PROPERTY OF NATURAL LIGHT FABRIC STRUCTURES AND SHOULD NOT BE REPRODUCED, PUBLISHED OR DISCLOSED TO OTHERS WITHOUT AUTHORIZATION AND SHALL NOT BE USED IN ANY WAY AGAINST OR DETRIMENTAL TO NATURAL LIGHT FABRIC STRUCTURES JORDAN, MN

DESCRIPTION:
65' Profile

SERIES:
DP65

DATE:
10-05-2010





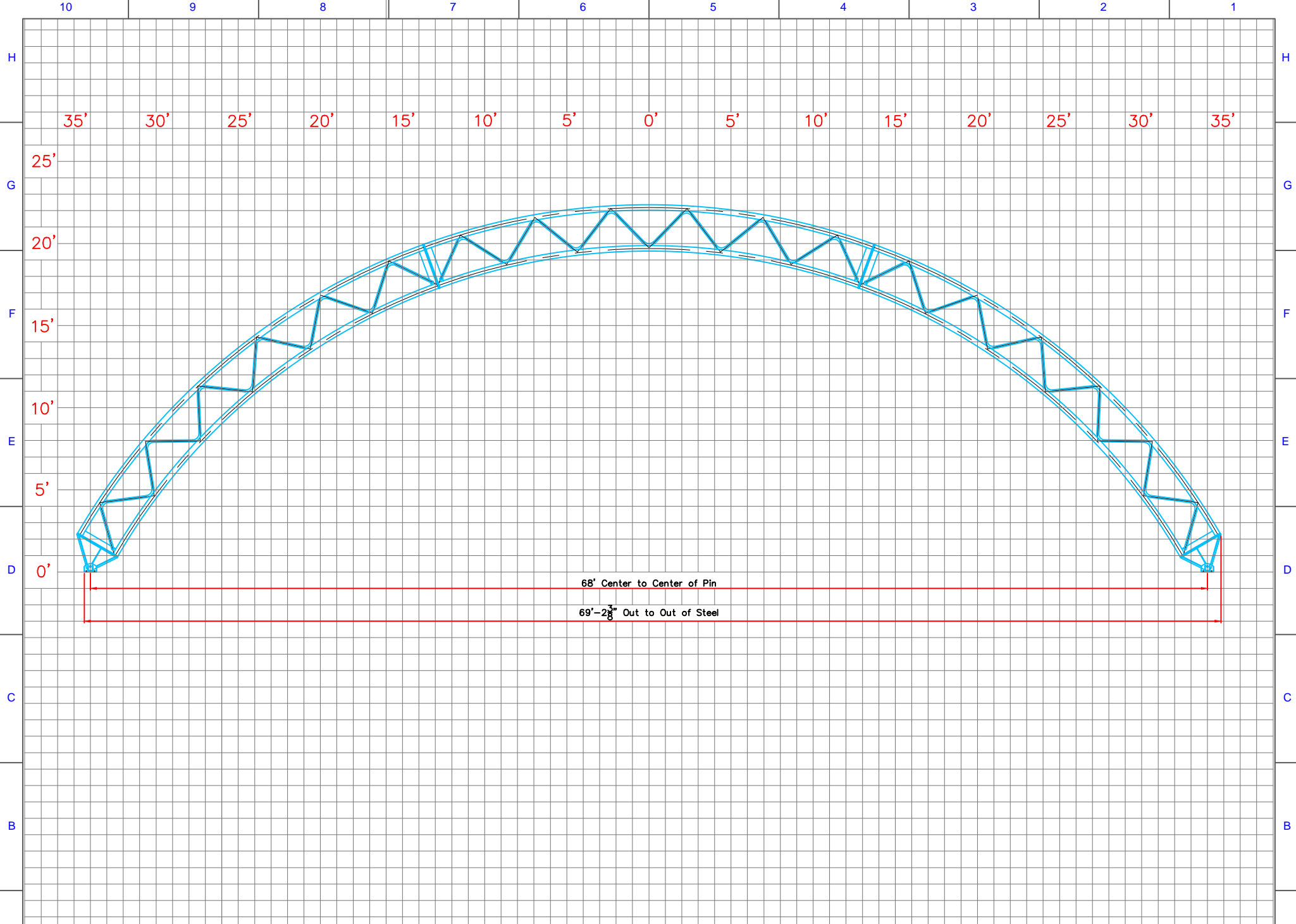
THIS MATERIAL IS THE PROPERTY OF NATURAL LIGHT FABRIC STRUCTURES AND SHOULD NOT BE REPRODUCED, PUBLISHED OR DISCLOSED TO OTHERS WITHOUT AUTHORIZATION AND SHALL NOT BE USED IN ANY WAY AGAINST OR DETRIMENTAL TO NATURAL LIGHT FABRIC STRUCTURES JORDAN, MN

DESCRIPTION:
65' Profile

SERIES:
DP65

DATE:
1-25-2011





35' 30' 25' 20' 15' 10' 5' 0' 5' 10' 15' 20' 25' 30' 35'

H
G
F
E
D
0'

H
G
F
E
D
0'

68' Center to Center of Pin
69'-2 3/8" Out to Out of Steel

THIS MATERIAL IS THE PROPERTY OF NATURAL LIGHT FABRIC STRUCTURES AND SHOULD NOT BE REPRODUCED, PUBLISHED OR DISCLOSED TO OTHERS WITHOUT AUTHORIZATION AND SHALL NOT BE USED IN ANY WAY AGAINST OR DETRIMENTAL TO NATURAL LIGHT FABRIC STRUCTURES JORDAN, MN

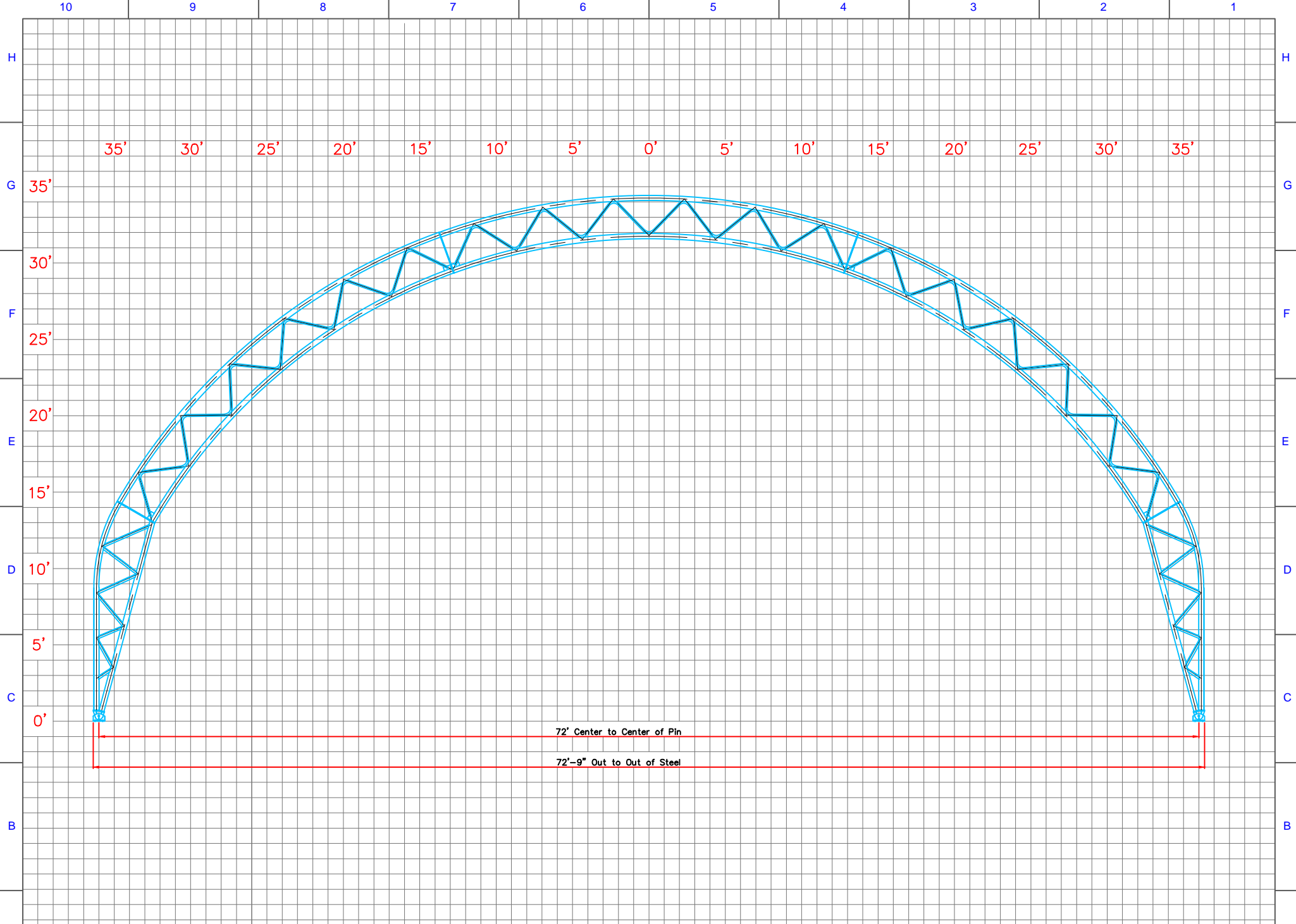
DESCRIPTION:
68' Profile

SERIES:
DP68

DATE:
1-25-2011



10 9 8 7 6 5 4 3 2 1



72' Center to Center of Pin

72'-9" Out to Out of Steel

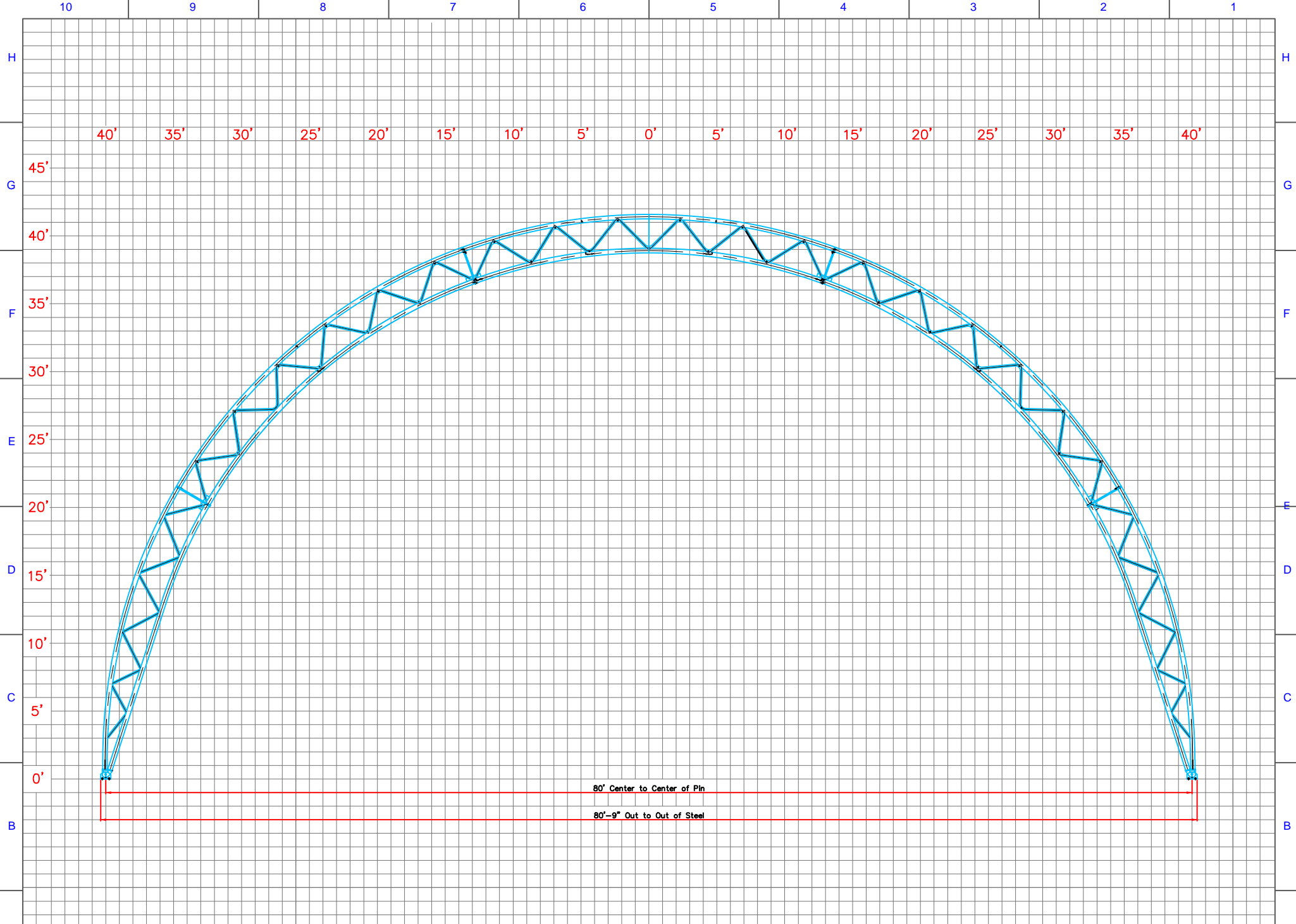
THIS MATERIAL IS THE PROPERTY OF NATURAL LIGHT FABRIC STRUCTURES AND SHOULD NOT BE REPRODUCED, PUBLISHED OR DISCLOSED TO OTHERS WITHOUT AUTHORIZATION AND SHALL NOT BE USED IN ANY WAY AGAINST OR DETRIMENTAL TO NATURAL LIGHT FABRIC STRUCTURES JORDAN, MN

DESCRIPTION:
72' Profile

SERIES:
DP72

DATE:
1-25-2011





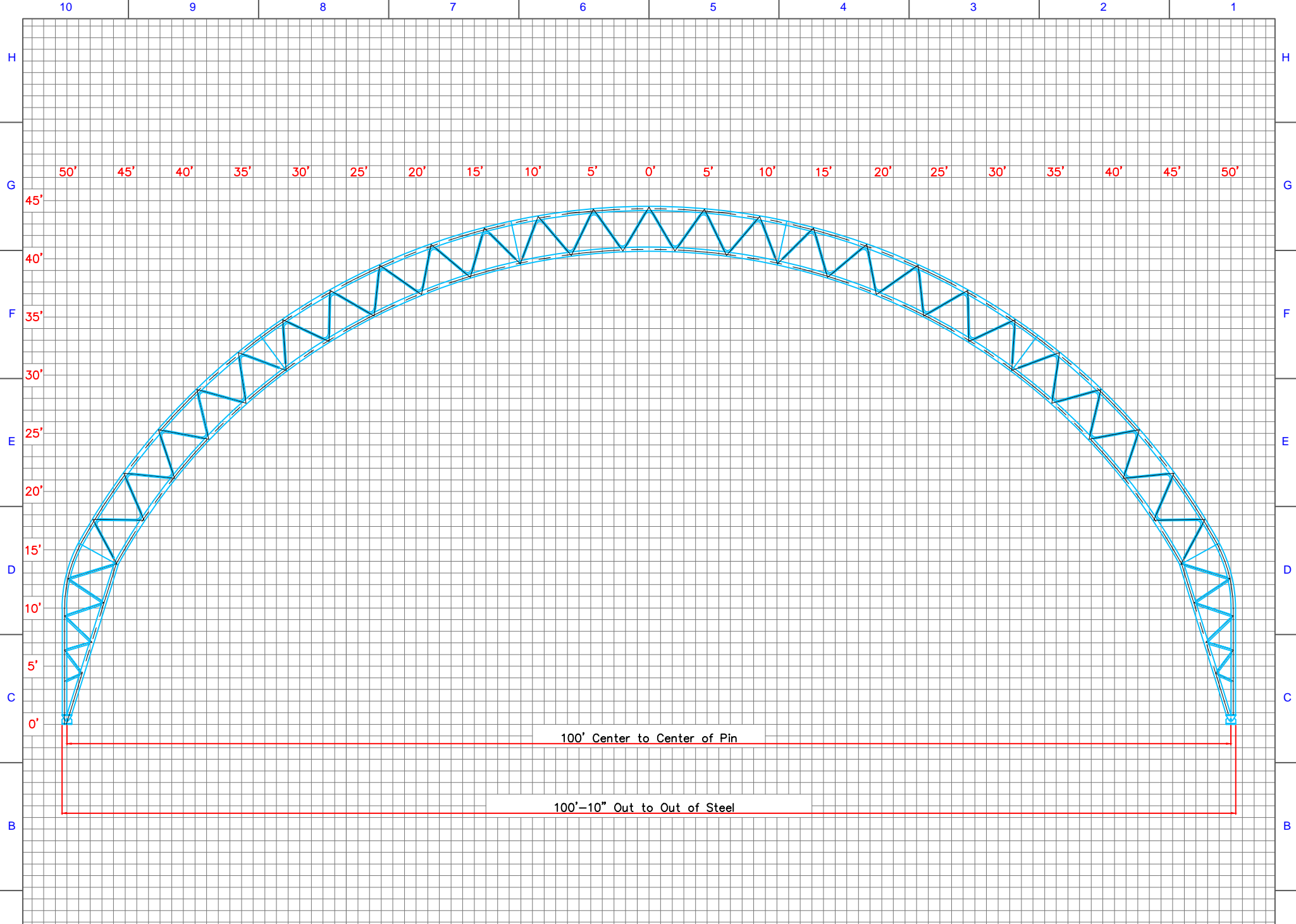
THIS MATERIAL IS THE PROPERTY OF NATURAL LIGHT FABRIC STRUCTURES AND SHOULD NOT BE REPRODUCED, PUBLISHED OR DISCLOSED TO OTHERS WITHOUT AUTHORIZATION AND SHALL NOT BE USED IN ANY WAY AGAINST OR DETRIMENTAL TO NATURAL LIGHT FABRIC STRUCTURES JORDAN, MN

DESCRIPTION:
80' Profile

SERIES:
DP80

DATE:
7-7-2011





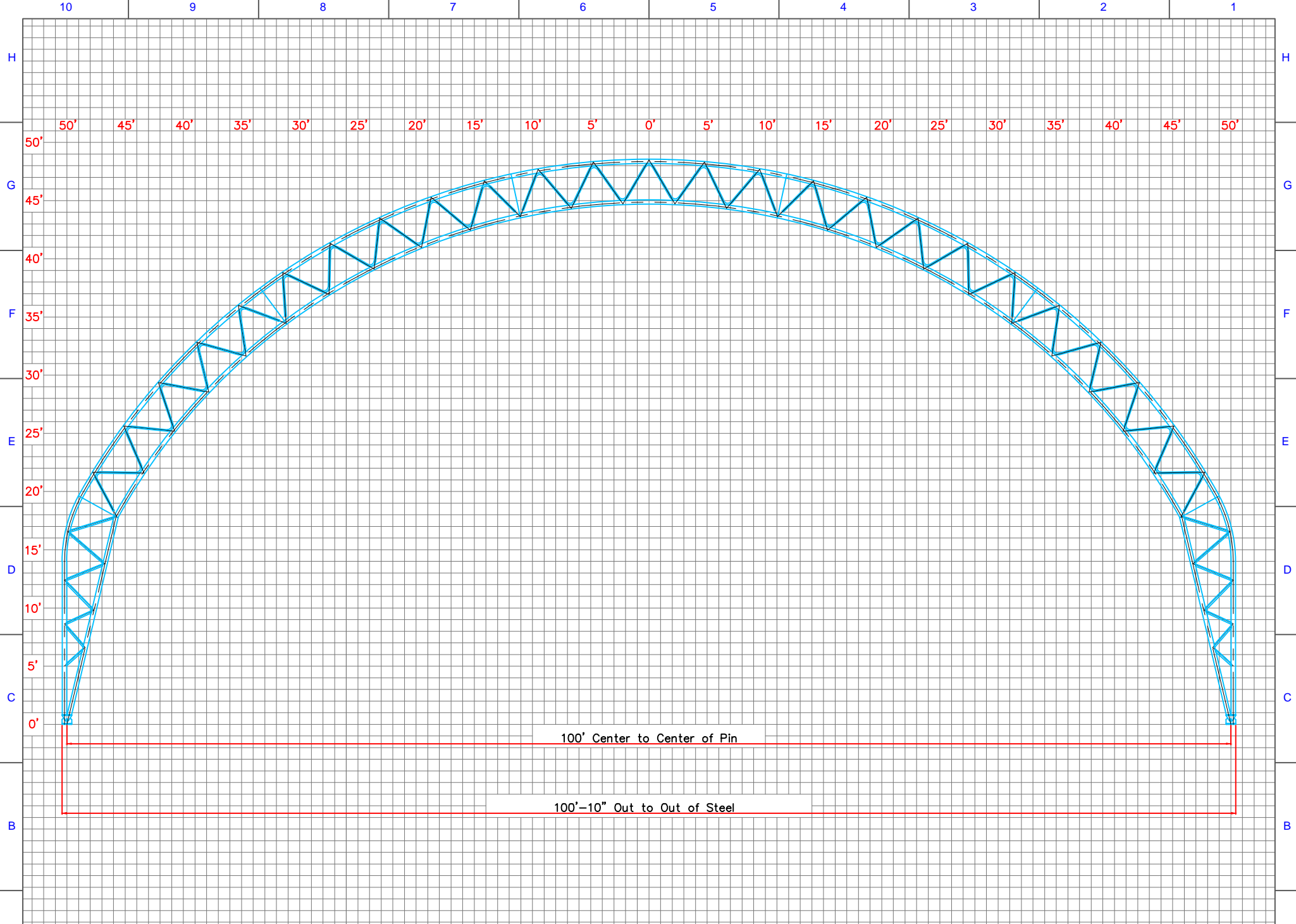
THIS MATERIAL IS THE PROPERTY OF NATURAL LIGHT FABRIC STRUCTURES AND SHOULD NOT BE REPRODUCED, PUBLISHED OR DISCLOSED TO OTHERS WITHOUT AUTHORIZATION AND SHALL NOT BE USED IN ANY WAY AGAINST OR DETRIMENTAL TO NATURAL LIGHT FABRIC STRUCTURES JORDAN, MN

DESCRIPTION:
100' Short Leg

SERIES:
DP100

DATE:
1-25-2011





THIS MATERIAL IS THE PROPERTY OF NATURAL LIGHT FABRIC STRUCTURES AND SHOULD NOT BE REPRODUCED, PUBLISHED OR DISCLOSED TO OTHERS WITHOUT AUTHORIZATION AND SHALL NOT BE USED IN ANY WAY AGAINST OR DETRIMENTAL TO NATURAL LIGHT FABRIC STRUCTURES JORDAN, MN

DESCRIPTION:
100' High Leg

SERIES:
DP100

DATE:
1-25-2011

